

# How to Install CUPS Driver ( CPCL )

Mobile Label Printer

Rev. 1.00



## 1. Linux(SUSE, Fedora Core, RedHat)

### 1.1. Installation.

1. Extract this archive creating the sewoocplinstall directory automatically.

```
# tar -zxvf sewoocplinstall.tar.gz
```

2. Open your favorite shell (bash, etc.) and move to the sewoocplinstall directory.

```
# cd sewoocplinstall
```

3. Execute the 'su' command to obtain super-user level permissions.

You must enter the root user's password for this to succeed. Be careful!.

4. Type 'make install' to install this package onto your computer.

```
# make install [Enter]
```

Or

```
> sudo sh setup.sh [Enter]
```

**A successfull install should result in output similar to this:**

```
# installing
cp ppd/*.gz install
cd install; exec ./setup
SEWOO TECH
SEWOO TECH CPCL CUPS driver installation Start
-----
```

Models included:

```
SEWOO LK-P11
SEWOO LK-P12
SEWOO LK-P30
SEWOO LK-P41
SEWOO LK-P43
```

Searching for ServerRoot, ServerBin, and DataDir tags in /etc/cups/cupsd.conf

ServerBin tag is present as an absolute path

DataDir tag is present as an absolute path

ServerRoot = /etc/cups

ServerBin = /usr/lib/cups

DataDir = /usr/share/cups

Copying rasterlkrp11 filter to //usr/lib/cups/filter

Copying rasterlkrp12 filter to //usr/lib/cups/filter

Copying rasterlkrp30 filter to //usr/lib/cups/filter

Copying rasterlkrp41 filter to //usr/lib/cups/filter

Copying rasterlkrp43 filter to //usr/lib/cups/filter

Copying Model PPD files to //usr/share/cups/model/SEWOO

Restarting CUPS

Shutting down cupsd

done

Starting cupsd

done

Install Complete

Add printer queue using K Menu -> Utilities -> Printing -> Printing Manager, or

Add printer queue using OS tool, <http://localhost:631>, or <http://127.0.0.1:631>

**5. Goto <http://127.0.0.1:631> or use your favorite CUPS admin tool.**

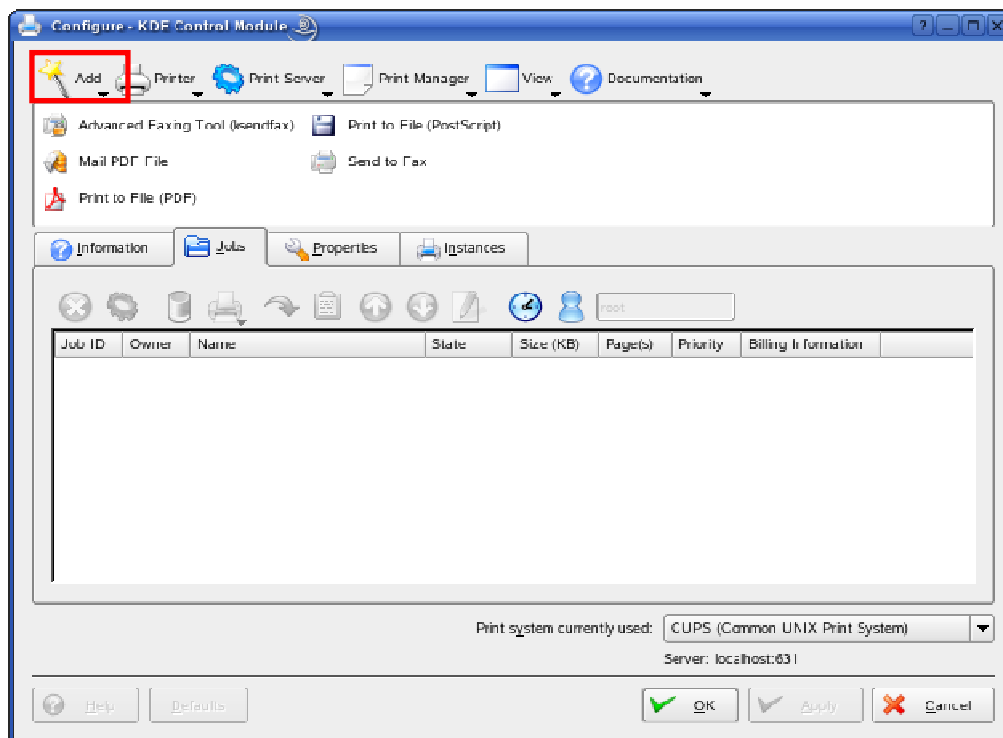
**Or K Menu -> Utilities -> Printing -> Printing Manager.**

## 1.2. How to Add Printer ( Example : SEWOO LK-P30 )

### 1.2.1. How to Add Printer(SUSE, Fedora Core)

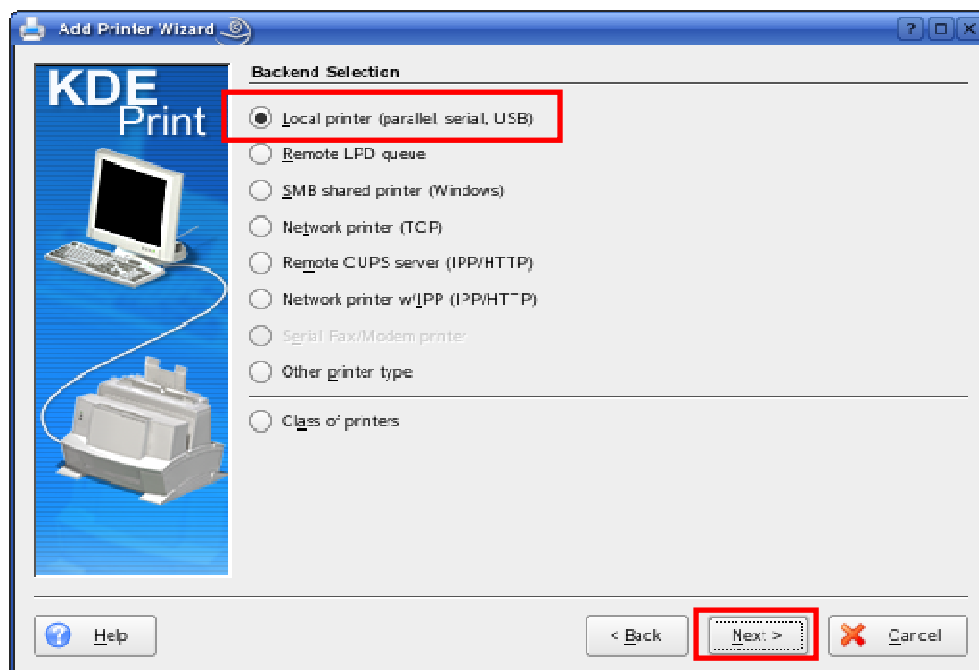
K Menu -> Utilities -> Printing -> Printing Manager.

Or <http://localhost:631>

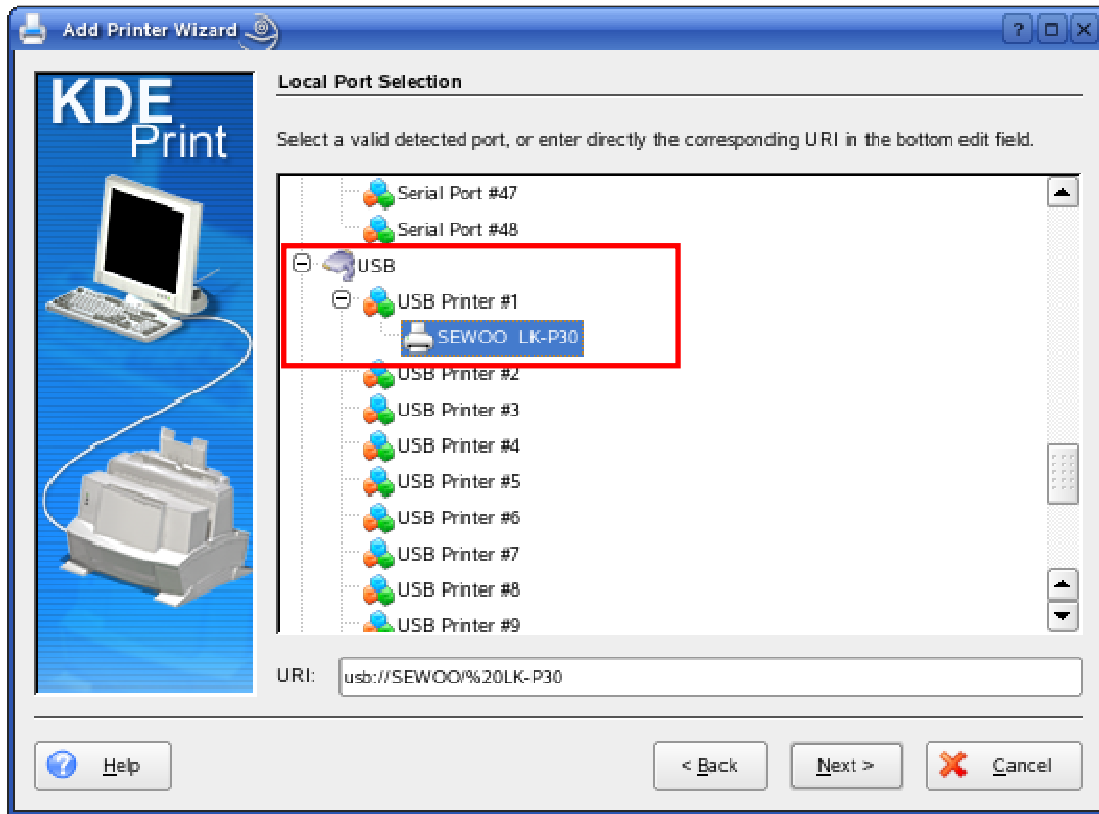


Add → Add Printer/Class... → Next → Local Printer(Parallel, Serial, USB)

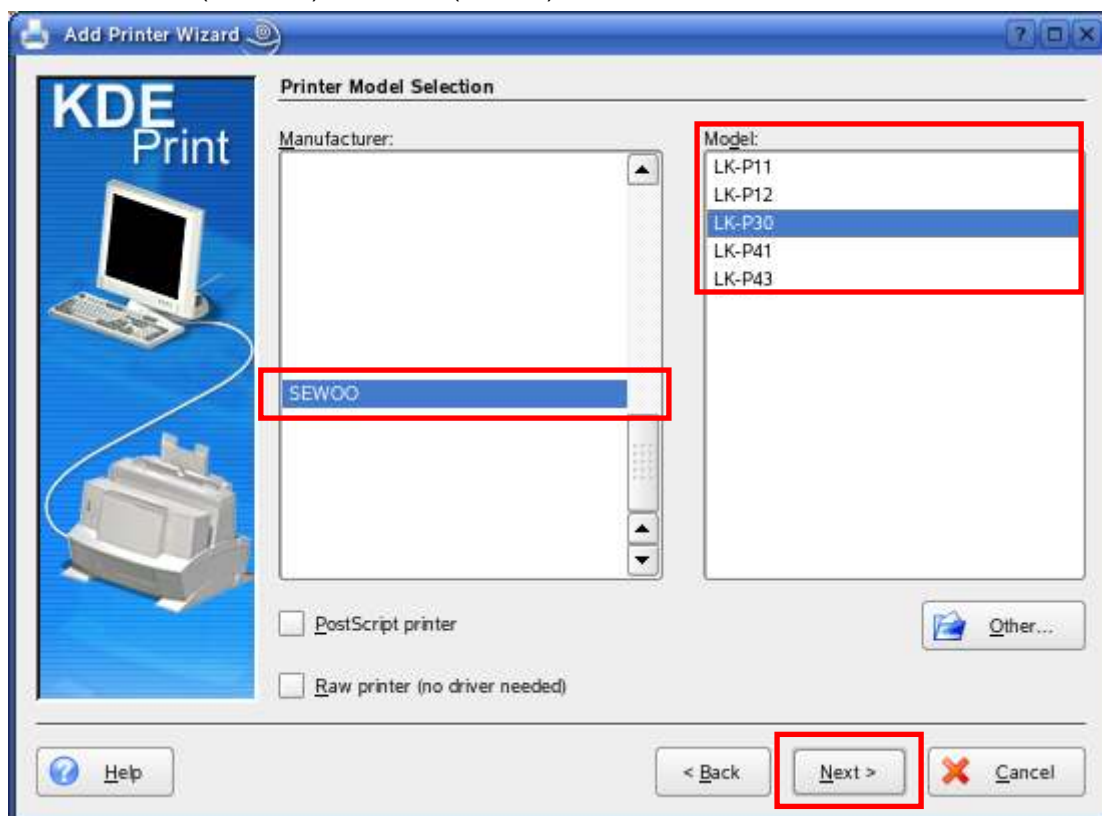
Or Network Printer(TCP)



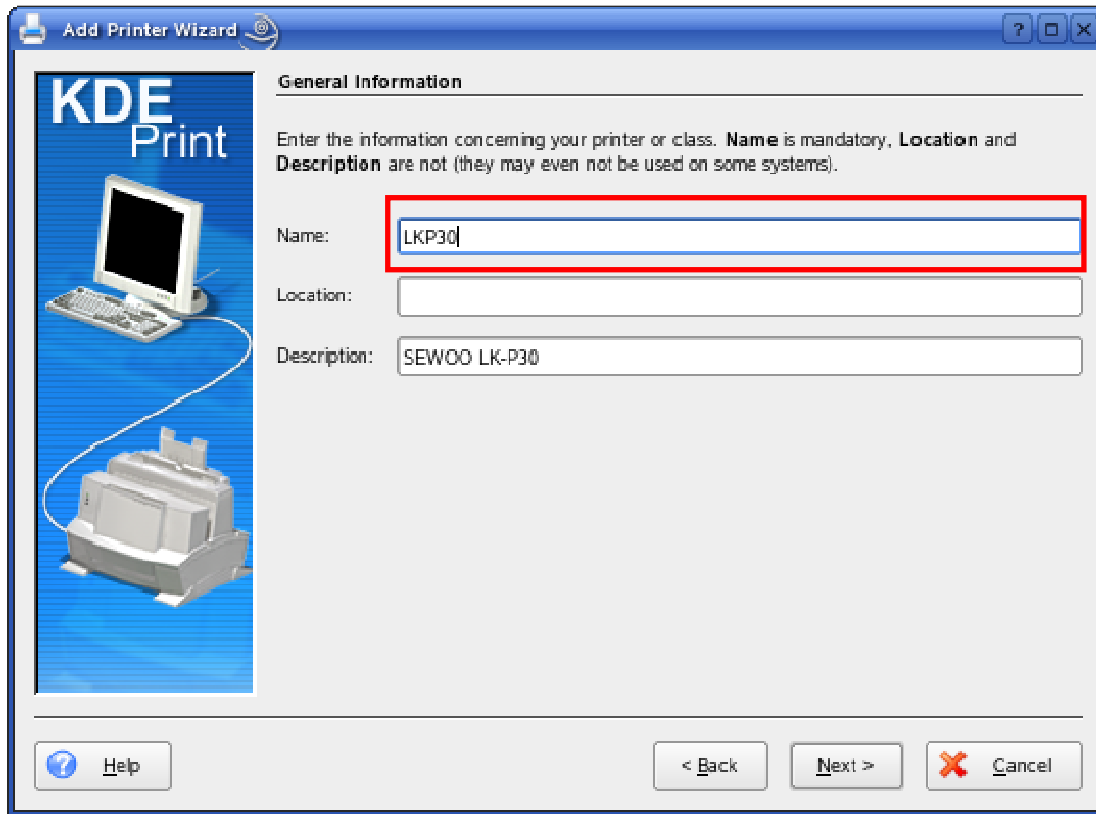
→ Select Local port.



→ Manufacturer(SEWOO) and Model(LK-Pxx)



→ Input the printer driver name.



**KDE Print**

**Add Printer Wizard**

**General Information**

Enter the information concerning your printer or class. **Name** is mandatory, **Location** and **Description** are not (they may even not be used on some systems).

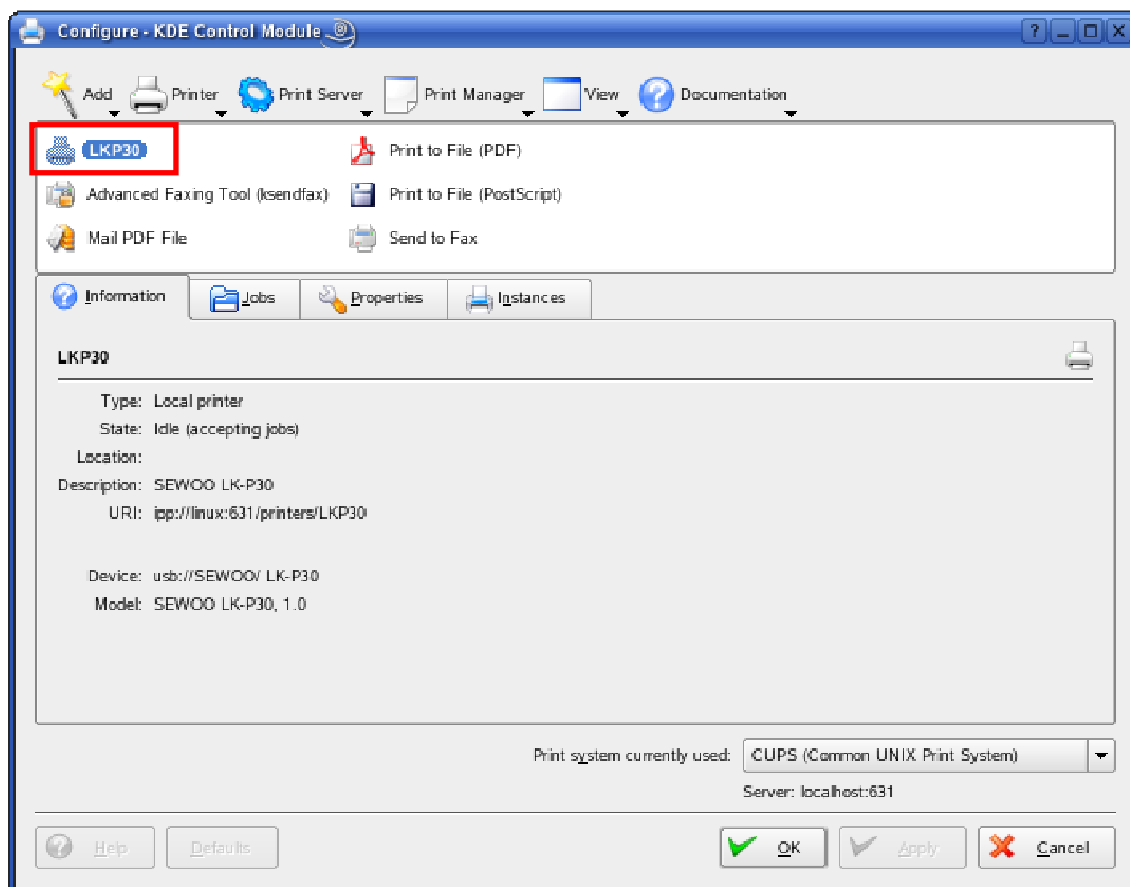
Name:

Location:

Description:

Help < Back Next > Cancel

→ End.



## 1.2.2. How to Add Printer(RedHat)

Start Application -> Preferences -> Printing Manager Or <http://localhost:631>

Add → Add Printer/Class... → Next

→ Local Printer(Parallel, Serial, USB)

Or Network Printer(TCP)

→ Manufacturer(SEWOOD) and Model(LK-Pxx)

→ End.

## 2. Linux(Ubuntu)

### 2.1. Installation.

1. Extract this archive creating the sewoocplinstall directory automatically.

```
# tar -zxvf sewoocplinstall.tar.gz
```

2. Open your favorite shell (bash, etc.) and move to the sewoocplinstall/install directory.

```
# cd sewoocplinstall/install
```

3. Execute the 'su' command to obtain super-user level permissions.

You must enter the root user's password for this to succeed. Be careful!.

4. Type 'make install' to install this package onto your computer.

```
# ./setup.ubuntu Destination-Directory [Enter]
```

Destination Directory → Directory to copy ppd files

**A successfull install should result in output similar to this:**

```
# installing
cp ppd/*.gz install
cd install; exec ./setup
SEWOO TECH
SEWOO TECH CPCL CUPS driver installation Start
-----
```

Models included:

```
SEWOO LK-P11
SEWOO LK-P12
SEWOO LK-P30
SEWOO LK-P41
SEWOO LK-P43
```

Searching for ServerRoot, ServerBin, and DataDir tags in /etc/cups/cupsd.conf

ServerBin tag is present as an absolute path

DataDir tag is present as an absolute path

ServerRoot = /etc/cups

ServerBin = /usr/lib/cups



DataDir = Destination-Directory

Copying rasterlkrp11 filter to //usr/lib/cups/filter

Copying rasterlkrp12 filter to //usr/lib/cups/filter

Copying rasterlkrp30 filter to //usr/lib/cups/filter

Copying rasterlkrp41 filter to //usr/lib/cups/filter

Copying rasterlkrp43 filter to //usr/lib/cups/filter

Copying Model PPD files to Destination-Directory

Restarting CUPS

Shutting down cupsd

done

Starting cupsd

done

Install Complete

Add printer queue using K Menu -> Utilities -> Printing -> Printing Manager, or

Add printer queue using OS tool, <http://localhost:631>, or <http://127.0.0.1:631>

**5. Goto <http://127.0.0.1:631> or use your favorite CUPS admin tool.**

**Or K Menu -> Utilities -> Printing -> Printing Manager.**

## 2.2. How to Add Printer

### 2.2.1. How to Add Printer(Ubuntu)

System -> Administration -> Printing. Or <http://localhost:631>

Menu(Printer) → Add Printer → Next

→ Local Printer(Parallel, Serial, USB)

Or Network Printer(TCP)

→ Manufacturer(SEWOO) and Model(LK-Pxx)

→ End.